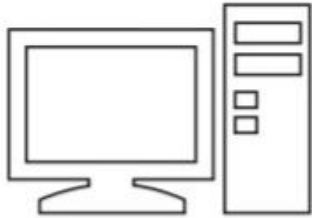


Relie l'image à la lettre convenable et colorie-la :



A

Q

O

a



Les voyelles

a

a

e

e

i

i

o

o

u

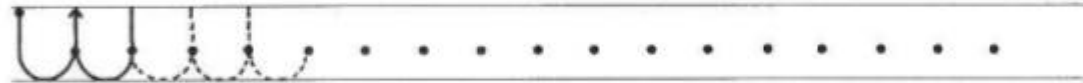
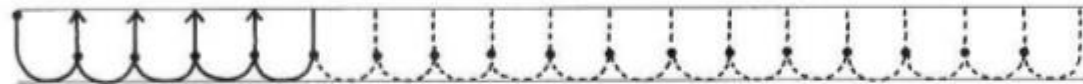
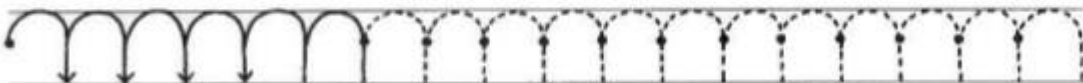
u

Prénom :

Date :

ÉCRITURE <small>(10)</small>	Les ponts
--	------------------

- Repasse ou prolonge suivant les modèles :



Prénom :

Date :

ÉCRITURE	Les lettres minuscules (01) Les lettres « a » et « o »
-----------------	--

La lettre "a"

- Repasse et prolonge suivant les modèles :

Handwriting practice for the lowercase letter 'a' on ruled lines. Each row contains a solid 'a' followed by a dotted 'a' for tracing. The first row has 7 'a's. The second row has 7 'a's. The third row has 3 'a's followed by four arrows indicating the stroke direction. The fourth row has 8 'a's. The fifth row has 8 'a's. The sixth row has 3 'a's followed by five arrows indicating the stroke direction.

La lettre "o"

- Repasse et prolonge suivant les modèles :

Handwriting practice for the lowercase letter 'o' on ruled lines. Each row contains a solid 'o' followed by a dotted 'o' for tracing. The first row has 7 'o's. The second row has 7 'o's. The third row has 3 'o's followed by four arrows indicating the stroke direction. The fourth row has 8 'o's. The fifth row has 8 'o's. The sixth row has 3 'o's followed by five arrows indicating the stroke direction.

Prénom :

Date :

ÉCRITURE

(03)

Les boucles

- Repasse sur les pointillés :



- Prolonge suivant les modèles :



Prénom :

Date :

ÉCRITURE

Les lettres minuscules (07)

Les lettres « i » et « u »

La lettre "i"

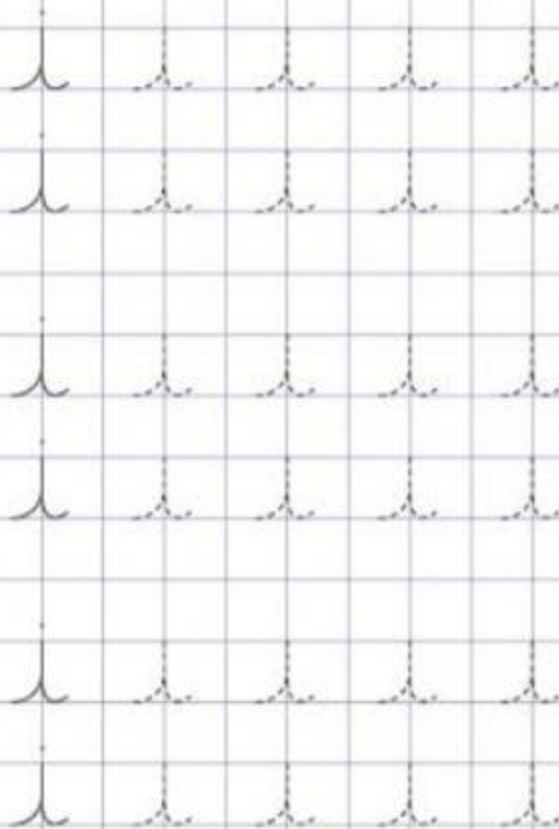
- Repasse et prolonge suivant les modèles :

Handwriting practice for the lowercase letter 'i'. Each row consists of a solid model letter followed by dotted letters for tracing. The first row has 7 letters. The second row has 7 letters. The third row has 7 letters. The fourth row has 9 letters. The fifth row has 9 letters. The sixth row has 9 letters.

La lettre "u"

- Repasse et prolonge suivant les modèles :

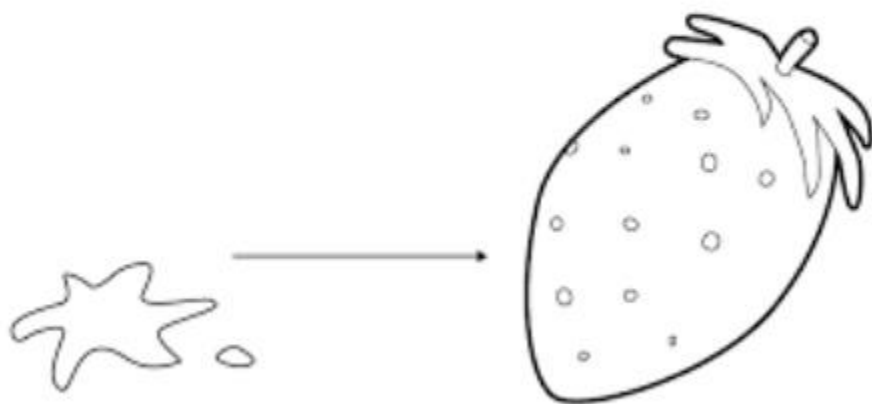
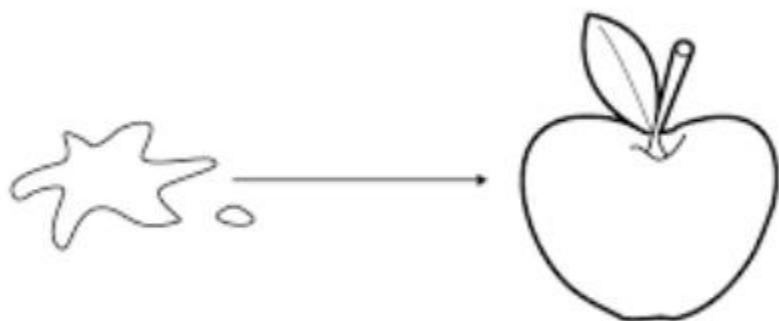
Handwriting practice for the lowercase letter 'u'. Each row consists of a solid model letter followed by dotted letters for tracing. The first row has 7 letters. The second row has 7 letters. The third row has 7 letters. The fourth row has 9 letters. The fifth row has 9 letters. The sixth row has 9 letters.



Nom :

Date :

Colorie les objets avec les couleurs qui correspondent.



Colorie les mots qui commencent par la lettre A, a



Coche les images qui commencent par la lettre E :



Entoure la bonne lettre de l' image :



a - o



a - o



a - o



a - o



a - o

Relie :



i



U



a



u



Colorie les mots qui commencent par la lettre O, o

